



**PTF Documentation FIS2000  
PTF002 for Release 2021.01**

---

## Table of contents


<b>TABLE OF CONTENTS</b> .....	<b>2</b>
<b>INTRODUCTION</b> .....	<b>3</b>
<b>NEW IN PTF002</b> .....	<b>4</b>
<b>NEW IN PTF001</b> .....	<b>5</b>
<b>NEW IN RELEASE 2021.01</b> .....	<b>6</b>
<b>TECHNICAL ENHANCEMENTS</b> .....	<b>7</b>
PTF002 .....	7
PTF001 .....	7
RELEASE .....	7
<b>FUNCTIONAL ENHANCEMENTS</b> .....	<b>9</b>
PTF002 .....	9
PTF001 .....	10
RELEASE .....	12
<b>CHANGES IN MENU OPTIONS</b> .....	<b>16</b>
PTF002 .....	16
PTF001 .....	16
RELEASE .....	16
<b>CONNECTING WITH OTHER APPLICATIONS</b> .....	<b>17</b>
<b>SOLVED ERROR MESSAGES</b> .....	<b>18</b>
PTF002 .....	18
PTF001 .....	19
RELEASE .....	21
<b>SUPPORT</b> .....	<b>23</b>

<https://www.pantheon-automatisering.nl/diensten/ibm-i-diensten/fis-fms/>

---


## Introduction

This document can be regarded as a guide for e.g. the application manager when implementing PTF002 for release 2021.01 of FIS2000 within the organisation.

 *With version 2021.01 of FIS2000 Pantheon also releases a 2021 version of all related software products, like e-Mapping, FAC, Spoolfile Manager and Billing (FAK). When you move to FIS2000 release 2021.01, you need to install the 2021 version of all software you are using - download from <https://www.pantheon-automatisering.nl/diensten/ibm-i-diensten/fis-fms/> choose 'Portaal'*

Please be aware of the following conditions and effects:

- You can only install this PTF when the 2021.01 Base release of FIS2000 is present on the server
- The installation of the 2021 Base release is **not** described here; please refer to the documentation provided with the release
- All payment and collection proposals, as well as draft, cheque and TAX proposals must be completed (including Pay Definitely / Definitely Collect) before installing release 2021.01
- If it is not yet present: install the Easy@ccess Basepack (version **8.5.1**) as supplied with this release; it contains the latest additions for Pantheon software
- Always install the Easy @ccess panels provided, both the general (in '/Panels/Shared Files') as the FIS2000-specific panels (in '/Panels/FIS2000'). The online help text is loaded automatically
- Users of the Online Approval module need to install the version provided with this PTF, version **2021.01.02**, as well as the most recent Webviewer, available on the Portal
- After installing this release, you will have to run the 'Modify file library for new Release/PTF' procedure for every FIS2000 data library on your system. During this process, the posting files will NOT be converted

 *We strongly recommend testing new software in a separate environment, especially if you use custom built software or third-party applications connected with FIS2000.*

Finally, for news and information worth knowing about FIS, please refer to:  
<https://www.pantheon-automatisering.nl/diensten/ibm-i-diensten/fis-fms/>

## New in PTF002

In short, the most important features and improvements in this release; additions information can be found in 'Functional Enhancements':

### Automatic payments in BACS format

As from this PTF domestic payments in BACS format are available. This format is primarily used in the UK and by British banks throughout the world.

### Display details of financial transactions in the archive

In the menu option 'Work with archive financial transactions' you can now view the details of individual transaction – similar to 'Work with User ID's financial transactions'.

### Variable separator in CSV-exports

For FIS the semicolon is the standard separator for exports in CSV format. For some users this presents a problem as this is not compatible with local Excel settings. For the exports used most, you can now enter a local alternative in your request.

### Automatic tick-off accounts

New matching fields are available in 'Automatic tick-off accounts'; as from PTF002 you can also match using Description-1 and/or Description-2.

### Reconciliation – Additional Transaction Information

From CAMT.053 files the item 'Additional Transaction Information' is now transferred to FIS and available for the 'tick-off' process.

### Inactive Debtors / Creditors

In the master data you can now indicate a Debtor/Creditor as 'inactive'. The 'inactive' status results in the fact that a Debtor/Creditor is NOT shown in the search functions for master data.

### Payments in (SEPA) WRLD format

In the master data for foreign bank accounts you can now store 'Purpose of Trade'. If you use this field the data is automatically used in SEPA payment files for foreign payments (WRLD format).

### Export to iVAT

For local VAT declarations in foreign countries, FIS can produce an export for the iVAT application of Avalara. PTF002 contains a number of modifications to reduce or eliminate manual adjustments.

### New Interfaces

Interfaces were added to the screen of Pay and Collect definitely, allowing you to add your own screen validations.

## New in PTF001

In short, the most important features and improvements in this release; additions information can be found in 'Functional Enhancements':

### Logging and approval functions in automatic payment and collection

As from PTF001 the use of one of the menu options in 'Automatic pay' or 'Collection' is logged. Log data can be exported using a new export option.

Also, you can now add an approval step to the payment process. The proposal (domestic or foreign) can be prepared and modified by one user, but it must be approved by another user before 'Pay definitely' can be selected.

### Additional bank details in Online Approval and Automatic pay

The receiving bank account number is now included in Online Approval and in Automatic pay. As it is also possible to view the electronic documents (scanned invoice) there is now an additional possibility to match the bank details of an invoice

### CSV-export in automatic payment and collection, and Process financial transactions

When a payment (or collection) proposal is created, you can also export in CSV-format. This export file can be used for additional checks and/or as an archive. Additional CSV-export is also available for 'Process financial transactions'.

### Extended handling of VAT-differences

When a VAT-difference is found, FIS can handle this automatically, taking into account a maximum VAT-difference specified in base currency. As from PTF001 this maximum difference can also be used for invoices specified in foreign currency.

### Approve modifications DB/CR master data

For new relations (Debtors/Vendors) it was necessary to approve all data (Name, subledger, banks), even if this was not specified in FIS. As from this PTF additional data sets are approved automatically when the Name and Address data is approved.

### Payments to output medium

This process can be executed multiple times in FIS, which could be risky as the processing of payment or collection data is more and more automated. When this option is selected more than once, the user must confirm he/she is intentionally running the procedure.

### View Db/Cr log data

Most FIS users log the significant modifications in Debtor/Creditor master data. In PTF001 additional functions have been added to view these modifications

## **New in release 2021.01**

In short, the most important features and improvements in this release; additions information can be found in 'Functional Enhancements':

### **Search for double payments / double invoices / check Cr-master data**

Release 2021.01 contains several new options to retrieve invoices that may have been paid twice or invoices that may have entered in the application twice

### **Generic search in 'Db/Cr Screen information'**

Release 2021.01 introduces 'generic search' in Db/Cr screen information. It is no longer needed to indicate the type of data you want to use (address data, postal code, bank account); just enter your search word and FIS uses all data available to retrieve the corresponding master data

### **Find (and remove) master data you no longer need**

No doubt, your financial master data (Accounts, Cost centres, Cost Units, Statistical numbers) contains item you no longer use. FIS now contains an option to retrieve master data you have not used in the current year. You can use this information to remove unused data before opening a new financial year. It also offers the possibility to remove this data by using an import file.

### **Period table for financial transactions**

The use of a period table allows you to control the posting date used in financial transactions. When you specify a date interval for each posting period, only dates within that interval are accepted in financial transactions.

### **Reorganise master files**

This function now offers the possibility to 'remove deleted master data only'. This procedure can be performed while FIS is being used by other users.

### **Store personal defaults**

The option to store your personal defaults was introduced in a few more functions. In other functions, FIS fills the screen with the selections you used the last time you used it.

### **Multiple foreign bank accounts for Creditors**

FIS can now handle up to 99 foreign bank accounts for creditors. This allows you to pay creditors (most likely outside the Euro zone) into an preferred bank account for different currencies.

### **Update timestamp in bank account master data (Domestic & Foreign)**

When bank data is modified, FIS stores date, time and user of the update in the master data itself.

## Technical enhancements

### PTF002

#### File changes in the database

In this PTF the following data files in the FIS2000 data library were altered:

DCALLS2	Logical for log file Db/Cr
DCAPSS	Debtor/Creditor master data
DCTS	Db/Cr master data for foreign bank account
DCRPBT	Reconciliation – Bank transactions
FAMS2	Logical for financial transactions (archive) - new

### PTF001

#### File changes in the database

In this PTF the following data files in the FIS2000 data library were altered:

DCAPIL	Bank master data
DCBPLB	Log file for the Payment and Collection functions (new)
DCIA	Db/Cr company master data
DCVPGB	Master data on FIS users
FAMW180	Work file postings
FASAO	Master data per FIS-data library

## Release

#### File changes in the database

In this release the following data files in the FIS2000 data library were altered:

DCAPSB	Db/Cr bank master data (Domestic)
DCTS	Db/Cr bank master data (Foreign)
DCT	Db/Cr bank master data (Foreign) (Logical)
DCT51	Db/Cr bank master data (Foreign) (Logical)
FAGPPT	Period table

#### Transfer to a new operating system

For Release 2021.01 of FIS2000 (and all its PTF's) version **V7R2M0** of the IBM Operating system is required; it is not possible to install FIS20000 software on V6-servers. This condition is checked during the installation process.

If you have questions on this subject, please contact Pantheon Automatisering. Call +31 513 657 357, or send a mail to [support@pantheon-automatisering.nl](mailto:support@pantheon-automatisering.nl)

## Upgrade Lega Suite software

You need to install new software from Legasuite: Basepack 8.5.1. Please refer to the release documentation (and loading instructions) for additional information.

Note: install the Easy@ccess panels from this PTF – panel sets always contain all panels. Remember that panels are distributed in two files: general panels (in '/Panels/Shared Files') and FIS2000 panels (in '/Panels/FIS2000').

Also check the version of the Seagull License Manager (LMS) – you will find all details in the loading instructions. If an update is required, the software can be downloaded from the customer portal. <https://www.pantheon-automatisering.nl/diensten/ibm-i-diensten/fis-fms/> select 'Portaal'

## Select your browser for the HTML Help texts

In FIS2000 function key <F1> triggers the Help function which displays help text in a browser.

Not all browsers present the help text correctly. If you encounter problems, you can solve this problem by using an alternative browser for FIS help text. Refer to your settings in the **defaults.ini** file (standard settings) or **custom.ini** file (your own settings) to indicate your browser of choice using the **BrowserHelp** keyword in the section [HELP]

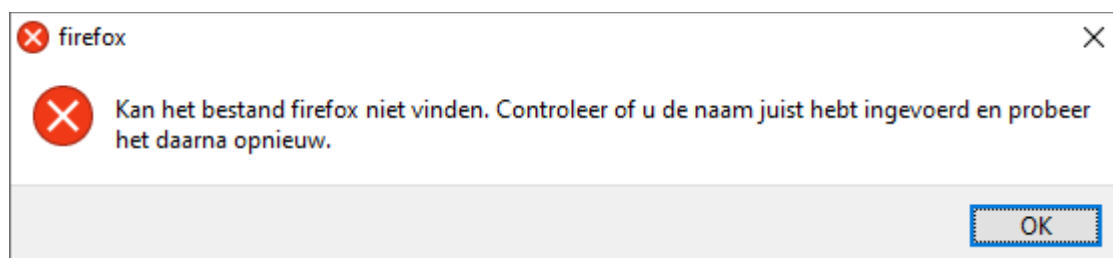
The options are:

BrowserHelp="1" (Chrome)  
BrowserHelp="2" (Internet Explorer)  
BrowserHelp="3" (Edge)  
BrowserHelp="4" (FireFox)

Example:

```
[HELP]
HelpSystem="HTML"
HelpFolderWindows="C:\Easy @ccess\app\"
HelpFolderJava="<webserverpad>/"
BrowserHelp="4"
```

If the selected browser is not installed on your pc/laptop, the following message is displayed:





## Functional enhancements

### PTF002

#### Payments in BACS format

As from this PTF in BACS-format is available. The BACS standard is mostly used in the United Kingdom, and by British banks in other countries.

#### View details of transactions in the archive

In the option “Work with archive financial transactions “ you can now zoom in on the details of the transactions. The functionality of “Work with user id. financial transactions” is now also available for archived transactions, so you can define your own layout numbers.

#### Flexible (field) separator in the CSV exports used most

The standard field separator for CSV exports in FIS is the semicolon. For users outside the Netherlands this sometimes presents problems when another character was selected as field separator in Excel.

For the exports that are used the most, you can now select your individual separator. If no separator is specified, FIS will automatically use the semicolon.

#### Automatic tick off accounts

In ‘Automatic tick off accounts’ two matching possibilities have been added: Description-1 and Description-2.

#### Status ‘inactive’ available for Debtors / Creditors

In the Db/Cr master data a debtor or creditor can be marked as inactive. All master data and all financial transactions remain in FIS, but the debtor / creditor is not shown in the search functions in FIS. Obviously, inactive master data can also be changed to ‘active’.

#### Foreign payments - WRLD format

In the master data for foreign bank accounts of creditors, you can now specify ‘Purpose of Trade’. If available, this code (up to 4 characters) or text (up to 35 characters) is included in SEPA payment files for World payments (WRLD). You can use either the code or the text – not both.

#### Export for iVAT

FIS contains an export function if your local VAT-declarations are handled by iVAT (by Avalara). PTF002 contains a number of modifications that will probably reduce the number of manual corrections.

#### New Interfaces in automatic Pay and Collect

On the detail screen for ‘Pay definitely’ (both domestic and foreign) and ‘Collect definitely’ you can now add any additional validations you may have. As from PTF002 FIS offers new interfaces to support this.

DCB039IN for domestic payments; started on screen DCB039.01  
DCB339IN for collections; started on screen DCB339.01  
DCK139IN for foreign payments; started on DCK139.02

All technical details are described in the FIS Interface manual.

## PTF001

### Logging and approval options in automatic pay and collect

As from this PTF the use of every menu option in automatic pay and collect is logged. Depending on the menu option, FIS also retrieves: the name of the payment or collection library, the FIS-data library involved, the company number, the number of invoices and the total amount. On 'Pay (or collect) definitely' the log includes the name of the payment file and the User-Identification of the financial transactions.

All log information can be exported through a new export option.

In addition, the possibility of approving a payment proposal (domestic and foreign) was added. The proposal is created and usually modified by one user but must be approved by another user, before the final processing can be chosen. And of course, the user who approves the payment proposal is not authorised to create or modify a proposal.

Select menu option 'List users' to define users in an approval role.

Select menu option 'Maintain general data', and then 'General - Summary company data' to (de)activate the approval of payment proposals.

### Bank information in Online Approval and in the payment process

The bank account number of the receiving bank is now visible during the approval of invoices in Online Approval, and during the modification of payment proposals in FIS. These options already offer the possibility to view electronic documents, so this offers an additional option to check.

Individual bank account numbers are also present when a payment is made to multiple account numbers.

### CSV-export for Payment & Collection proposals and in the Processing of financial transactions

When a payment or collection proposal is created or modified and reprinted, a new option was added to create additional output in CSV-format. This export can be used for extra checks and/or as an archive.

Additional CSV-export is also available within 'Process financial transactions'. In order to ensure that this export is performed in all circumstances, the export details are handled through menu option 'List file data' and then 'Settings financial transactions'.

Specify an IFS-location and – optional – a name for the export files. The export file name is always completed with the FIS batch number and a timestamp.

### **Additional functionality on VAT-differences**

When an invoice is processed in FIS, the software automatically detects and handles a VAT-difference – if VAT-codes are used and an account number was specified for VAT-differences.

For each currency you can specify the maximum allowed VAT-difference, in order to prevent input of typing errors from being processed as a VAT-difference.

The maximum difference allowed can be specified for each currency individually, but as from PTF001 you can choose to specify this maximum for the base currency only. When handling posting in foreign currency, FIS automatically converts the difference found to base currency and compares the result with the limit in base value.

### **Approve modifications in Debtor/Creditor master data**

In case of verified maintenance of Debtor/Creditor master data, it was needed to approve all data groups (Name/Address data, subledger, domestic bank and foreign bank) in case of a new relation; even if approval was not specified for the subledger or bank data.

These unnecessary actions are no longer needed. After the approval of the Name/Address group the data groups for which no approval is required, are approved automatically.

### **Payment and Collection files to output medium**

This action can be executed multiple times, which could be risky in environments where the processing of these files (the communication with your bank) is more and more automated.

In PTF001 an extra check has been implemented: if this menu option is selected more than once, the user must confirm the action on an additional screen.

### **Archive for Payment and Collection files**

In the master data of your own banks ('Bank data - Per bank') there is a new possibility to add payment and collection files, created in FIS, to an archive. The archive consists of a separate IFS-location on the server.

If you want make backups of your payment and collection files, simply specify a separate IFS-location in the master data. The location must be present and cannot be the same as location where the regular bank files are stored.

### **View Debtor/Creditor log data**

The log data of debtors and creditors can also be viewed from the Db/Cr Address window.

### **FIS Belgium – save IFS locations**

The IFS location that used for export is saved by FIS and presented for the next occasion, for:

- Print invoice day book
- Close period day book
- Day book overview
- Day books centralisation

### Zero invoices to history

This task can now be run using the job scheduler. There is one condition: the invoice and payment must be entered through a number of days, in comparison to the system date. FIS allows a maximum of 365 days.

## Release

### Search for double payments, double invoices; check master data

Release 2021.01 contains new investigative functions designed to retrieve invoices that may have been entered in FIS twice and/or payments that may have been done more than once.

The 2021.01 base release contains reports for:

#### *Checks on bank master data*

Which creditors have more than one bank account in their master data? Does a specific bank account number appear with more than one creditor?

#### *Warnings on payments*

Have payments been made to bank accounts that no longer exist in the FIS master data? Has a bank account number been changed after a payment was made? Have invoices been paid to more than one bank account?

#### *Warnings on payment characteristics*

Does FIS contains invoices for one creditor with identical payment characteristics? Or can invoices be found with similar payment characteristics?

#### *Search invoices by selected elements*

This option collects all invoices of a creditor and compares them on selected elements. This offers the possibility, for example, to retrieve invoices from one creditor, for the same amount, in the same financial period with the same posting date.

The following items can be used to group invoices of one creditor:

- Amount
- Number
- Posting period
- Day book
- Item number
- Invoice date


- Due date
- Payment characteristics
- Payment reference

### Archive financial transaction

As from release 2019.01 (PTF002) FIS contains an automatic archive for financial transactions. After processing, financial transactions are placed in an archive and stay there for a minimum of 15 days. This period can be enlarged by the application manager.

The data in the archive can be used to easily generate new financial transactions, when required.

In release 2021.01 extra safety measures were added for FIS environments where 'processing financial transactions' is executed very frequently or in case a longer storage period is chosen.

 *There is a technical limit to the archive; the details of up to 32,700 so-called "User-identifications" can be stored. If this number is reached, the oldest transactions are removed automatically to allow storage of the latest transactions*

### Generic search in DB/CR screen information

In most cases users start by selecting a debtor or creditor. These relations can be found through a number of search functions, each intended for a specific data element – like number, search-item, bank account or name/address.

Release 2021.01 offers a new generic search so you no longer need to specify the data element you want to use for your search action; just enter your search word and FIS performs a search action on all search items in the master data.

### Remove unused master data

In most cases the financial master data (Accounts, Cost centres, Cost Units etc.) is duplicated at the end of each year. Master data you have not used in the current year is included automatically, so your master data may contain a certain amount of information that you do not need.

Release 2021.01 offers a new function to retrieve unused master data. Initially it consists of a report; you can remove this data manually, but FIS can also perform these actions for you.

The reporting software also allows you to generate a result file with unused items. You can use one of the 'batch-input' functions on menu 'Financial – Batch input' to actually remove the master data you do not need. Obviously, you can view and modify the data in the result file beforehand.

### Increase availability of FIS2000

A number of tasks in FIS2000 can only run when no users are active in the application, like 'Physically reorganise master files'. For release 2021.01 these tasks were reviewed in order to increase the availability of FIS.

When an account is deleted in FIS, it is not actually removed from the file but set to 'inactive'. The account number concerned cannot directly be reused for another purpose; inactive elements need to be removed first when you want to use the account numbers again.

These actions are part of 'Physically reorganise master files' and can only be performed when FIS users (or any other tasks) are not using the application.

For this reason, in 'Physically reorganise master files' a new option has been added: 'Perform deletions only'. This allows you to actually remove inactive numbers, while users are working in the application.

A similar modification was made to the option 'Rebuild cumulatives'. You can rebuild specific 'cumulatives' while users are active. Please note that some specific functions (like Screen information postings and most reports on the menu 'Financial - fixed overviews') are not available while the rebuild is performed.

### Period table for financial transactions

As standard there is no link between the posting year and period (daybook elements) and the posting dates used in financial transactions. The posting date just needs to be valid and you can only activate an informational message on screen when a posting date is not within your limits.

If you desire more control, you can now work with period tables. In a period table (up to 9 tables can be defined) you can specify the exact date interval that is valid for each posting period. Then link the period table to the day book master data and posting dates outside the specified interval are regarded as errors. This applies to all financial transactions, regardless of their origin (entered manually, imported, generated etc.)

### Store personal defaults

In this release more FIS functions allow you to store personal settings; on other functions the user input is saved and represented the next time you select the option.

- Change Reconciliation – the selection for transactions (traced, probably traced or not traced) is saved and applied again when the user starts this option
- Transfer external financial transactions: all input fields are saved and shown on next selection
- Batch-input debtors/creditors/accounts: all input fields are saved and shown on next selection

### Timestamp & User of last update stored in bank master data

In the maintenance programs for bank master data (Debtors and Creditors; both foreign and domestic) FIS now stores who (User profile) made the most recent modification and when this occurred.

These data are stored in the master data itself, so this information is available in export functions like e-Transaction en e-Mapping.

### Multiple foreign bank accounts per Creditor

As from this release, up to 99 foreign bank accounts can be stored in de creditor master data. If you needs to pay suppliers in multiple currency, you can now define separate bank accounts for each currency. In that case, indicate the bank account you wish to pay to, when you enter the invoice in FIS2000.

- ☛ *Only one bank account can be selected for each invoice. It is not possible to pay an invoice into multiple (foreign) bank accounts*

## Changes in menu options

### PTF002

No modifications in this PTF

### PTF001

#### **FISLOG      Logging**

- Export logging payments/collections      New

#### **FISDCB      Automatic pay (domestic / foreign)**

- Payment proposal reprint / approve      Approval function added

## Release

#### **FISOND2      Financial - maintenance master data (2)**

- Overview of inactive master data      New
- Work with inactive master data      New
- Maintenance period table - financial      New

#### **FISDCA3      Debtors – Creditors (3)**

- Analyse CR master data / invoices / payments      New



## Connecting with other applications

All changes described so far, may affect connections with other applications on your PowerSystem. All existing interfaces are supported; in most cases new fields have been added at the end of parameter strings.

Additional information and more technical details are available in the handbook Interfaces in the Online Help text.



- FIS2000 release 2021.01 can also be connected to other Pantheon applications. Together with FIS2000 a 2021.01 release for all FIS related applications has become available. If you upgrade one of these applications to the 2021.01 level, you need to install the 2021.01 release of all other products as well.

If you have any questions regarding connections with FIS2000, please contact Pantheon Automatisering. For up-to-date information; go to:

<https://www.pantheon-automatisering.nl/diensten/ibm-i-diensten/fis-fms/>

## Solved error messages

In the list below, you can find all messages that have been solved for the corresponding release. The support-ID or internal R&D number is assigned to each of these messages.

### PTF002

Menu option	Number	Description
General	FIS210102	FIS 2021.01 PTF002
Automatic domestic payments	ACC176	Payment in BACS format now available
Automatic foreign payments	ACC178	Payment percentage of 100% was lost after running the foreign payment process
Automatic domestic payments	ACC200	Authorisation on BACS payment files was set incorrectly
Work with archive financial transactions	FIS63	New option to display the details of transactions in the archive
Verified maintenance	FIS64	Additions in DCA440IN-interfaces in combination with verified maintenance
Automatic foreign payments	FIS66	Several checks on country codes removed for WRLD payments
Automatic collections	FIS68	Counters on the collection proposal for Belgian companies were not always correct
Export modifications DB/CR master data	FIS69	Extra columns added to the export file
CSV exports	FIS72	Variable separator added for the CSV exports used most
Automatic tick-off accounts	FIS73	Tick-off can now also be executed using Description 1 or Description-2
Reconciliation Tick-off	FIS74	Retrieve more information from CAMT.053 files
Debtors/Creditors	FIS76	Functionality to skip inactive Db/Cr relations in search functions
Automatic foreign payments	FIS77	CNAPS2 code or text for payments to China
Supply iVAT	FIS79	Modifications in iVAT export
Pay / Collect definitely	FIS81	Introduction of interfaces to allow individual checks on these screens

<b>Menu option</b>	<b>Number</b>	<b>Description</b>
function authorisation	FIS83	Function authorisation was not handled correctly when the general authorisation was switched off
CSV exports	FIS85	Right trimming of blanks added for alphanumeric fields
WRLD Payments	FIS87	An error would occur when a company name was used less than 5 characters long
View Log data of Db/Cr master data	ITG35	Optional sorting on date/time was added
Print collection proposal	SLG404	Running a collection proposal in the job scheduler ended in error
Online Approval	SLG418	Under specific circumstances error CEE9901 could appear in program FCA350
Automatic collection	SLG420	Bank settings were not always copied correctly in collection proposal
Tick off wait accounts	TVM36	Screen presentation was incorrect

## PTF001

<b>Menu option</b>	<b>Number</b>	<b>Description</b>
General	FIS210101	FIS 2021.01 PTF001
Online Approval	FIS37	Bank account numbers of creditors are now displayed on the invoice detail screen
Belgium	FIS38	For all menu options that offer IFS-export the last path and document name used remain present on screen
Maintain DB/CR-master data	FIS39	Use of the Cancel button on screen DCA405.01 could result in a program loop
Supply audit file Audicon	FIS40	Manual postings on 'ledger accounts' were not included in the AUDICON export
DB/CR screen information & Screen information postings	FIS41	The availability of button 'Display document' can be managed through authorisations
Create new library	FIS42	During this process not all Data Areas were created correctly

<b>Menu option</b>	<b>Number</b>	<b>Description</b>
DB/CR screen information	FIS43	Button "Dossier/Invoice" would start a selection of postings, even when the original posting did not contain a dossier or invoice number
Process financial transactions	FIS44	When processing appointments, the user and timestamp were not stored in the appointment data
Zero invoices to history	FIS45	This action can now be run using the job-scheduler
Reconciliation / Tick-off	FIS46	The tick-off process could be started while 'Structures & Key data' were not present
Maintain day books	FIS23	The maintenance screen was redefined
Automatic pay & collect	FIS24	Introduction of logging and approval options
Automatic pay & collect Process financial transactions	FIS25	Options export to CSV for new postings
Export modifications DB/CR master data	FIS32	For some log records of key data the description was missing
Maintain proposal turnover tax declaration	FIS7	Additional functions to view the posting that were included in a proposal
View Db/Cr log data	FIS8	Additional button in the Db/Cr address window to view log data
Maintain DB/CR-master data	FIS47	Bank sequence number 0 cannot be defined as a 'G-account'.
Automatic pay & collect	FIS48	SHA1-calculation could end in error in a V7R4-server
Input financial transactions	FIS49	New list function for discount tables
Automatic pay	FIS50	Clearing code missing in ING BTL91-format
Input financial transactions	FIS51	Item "Document-ID" now allows lower case input
DB/CR screen information	FIS53	Under specific conditions, the Cost centre and Cost Unit of an invoice were not displayed correctly
Control report financial transactions	FIS54	A VAT difference in foreign currency was not detected
Approve modifications DB/CR master data	FIS55	Master data 'en route' sometimes needed approval, even if this was not required

<b>Menu option</b>	<b>Number</b>	<b>Description</b>
Transfer external financial transactions	FIS56	Item MBOMS2 (second description field) was not present in the import function
Automatic foreign payments	ACC175	In WRDL-format, the currency descriptions of specific bank accounts could be in error
Revalue invoices	WEC47	Due to a missing currency code, some debtors / creditors would not be selected for revaluations
Proposal turnover tax declaration	FIS36	Output location QDLS could be selected even though it was not allowed
Modify file library for new release/PTF	MJRSLG385	Selections modified in FAKG1913R1 to reduce processing time
Select postings	MJRWEE14	The notes belonging to an individual posting were not always selected/printed

## Release

<b>Menu option</b>	<b>Number</b>	<b>Description</b>
Definite payment / collection	ACC122	Authorisations on the payment file (in IFS) are copied from the IFS location; An error was corrected in the SHA-calculation for foreign payments
Pay definitely (Foreign)	ACC125	Improved handling of Clearing codes
Pay definitely (Domestic)	ACC130	The maximum amount to be paid was not always applied correctly in the payment process
Export invoices in approve	ACC132	The export now contains additional information about the invoice
Pay definitely (WRDL)	EWL79	For WRDL-payments through a Belgian bank the amounts paid were not always correct
Print annual VAT-list	ESP-16	Negative turnover/VAT (due to corrections) was not included on the overview/ in the XML-export
Screen information Db/Cr	ITG8	When an invoice is blocked for payment, this is now also shown on the invoice detail screen
Online Approval	SBR6	Notes linked to historic invoices were not always visible in Online Approval

<b>Menu option</b>	<b>Number</b>	<b>Description</b>
Control report financial transactions	SLG355	Under circumstances, the check for unique payment characteristics and/or payment reference (per DC-nr) would not work
Reconciliation – Tick Off	191003	The processing of CAMT-information would end in error when the currency date was absent
FIS General	2101	General project release 2021.01
Analysis CR master data, invoices and payments	210001	(New) Specific analysis to retrieve or prevent invoices from being entered (or paid) twice
XML Audit files	210002	After modification of the software, FIS can now generate audit files larger than 2 Gb
Change Reconciliation; Transfer external financial transactions; Batch-input debtors/creditors/accounts	210003	New options to store personal settings; on starting the option, previous selections are shown as default
Screen information postings	210004	The export to CSV was limited to 9.999 lines; this restriction no longer applies
Select sub-ledger lists	210005	You can now start the maintenance function, directly from the selection
Screen information Db/Cr	210006	Generic search in Db/Cr master data; search actions can be applied using all search items in one go
Retrieve/remove inactive master data	210007	(new) Overview of master data that was not used since a specific data; including the possibility to remove these data using batch-input options
Modify file library for new release/PTF	210008	File conversion 2101.01 – update and set starting value to 2016.01
Automatic payments (Foreign)	210009	(new) In the creditor master data you can now enter multiple foreign bank accounts
Physically reorganise master files & Rebuild cumulatives	210010	Increased availability; functions can now be used while the FIS application is in use
Prepare document in folder based on layout	210011	When ‘long description of master data’ was selected in the definition, the export still contained the regular description

Menu option	Number	Description
Maintain chart data	210012	Under specific conditions, modifications in 'VAT / discount data' were not stored correctly in the database
Approve modifications DB/CR master data	210013	Approval of remove actions using import file DCA240IM (Inactive Db/Cr) was not possible
Input financial transactions; Maintain day books; Maintenance period table	210014	(new) Introduction of the period table for financial transactions
Create settlement proposal; Work with settlement proposal	210015	Extended authorizations are now available
Db/Cr Bank master data (Domestic & Foreign)	210016	Timestamp and User ID from the most recent update action are now stored in the master data
Online Approval	913016	The process of 'Create financial transactions from codings' can now be used simultaneously by multiple users
Work with reconciliation files	913017	The overview screen now shows the description of the bank in question, instead of a file description

## Support

- In order to guarantee the continuity of your applications, Pantheon Automatisering offers various types of support. What to do if you want to use these services?
- For a problem involving Pantheon standard applications, please contact the Support Desk by mail: [support@pantheon-automatisering.nl](mailto:support@pantheon-automatisering.nl). A concise problem description is sufficient for the Service Desk to tackle the problem (within opening hours).
- For support during the installation and/or implementation of Pantheon applications you need to make a reservation; please contact us 14 days in advance. This type of support can be given at any time (during/after business hours), on location or by phone. For these services fixed tariffs apply.

You can reach Pantheon by phone: **+31 513 657 357**

You can also use this number, should you require additional information on other types of support, such as training and advice.